

Lives Shelf

Spec Guide

Issued September 2024



Lives Shelf

Line up



Shelf Unit



Coat hanger Unit

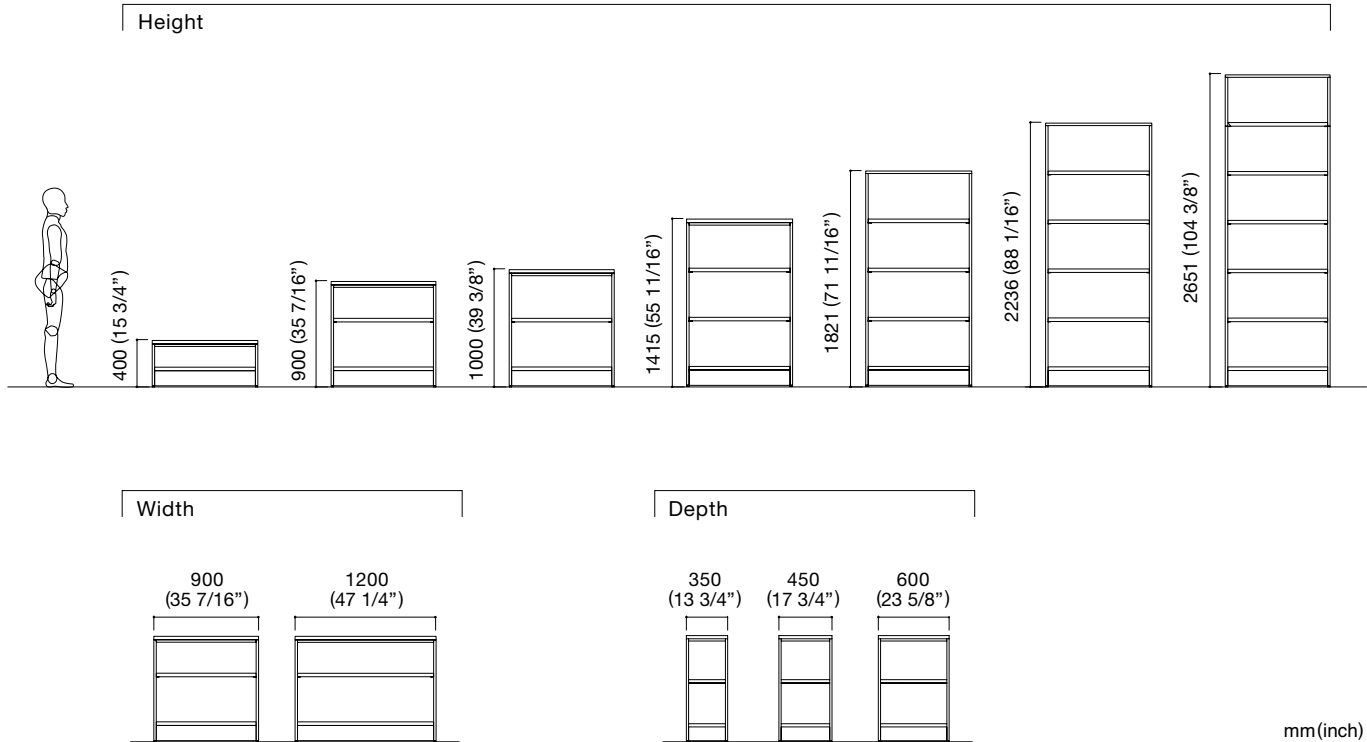


Monitor unit

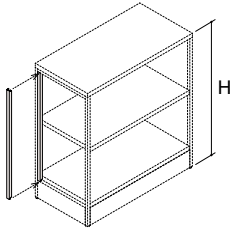
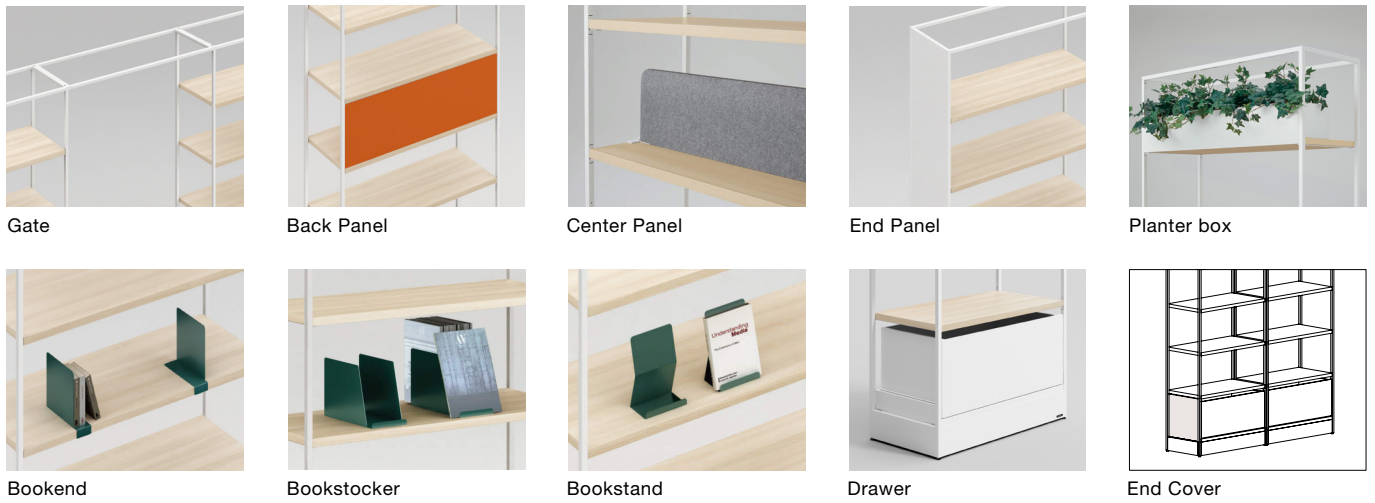


Whiteboard unit

Shelf Unit Size Variations



Options



Wiring Cover

For 900H(35 7/16")

ML92ECN-Z□□□

For 1000H(39 3/8")

ML92EEN-Z□□□

For 1415H(55 11/16")

ML92EFN-Z□□□

For 1821H(71 11/16")

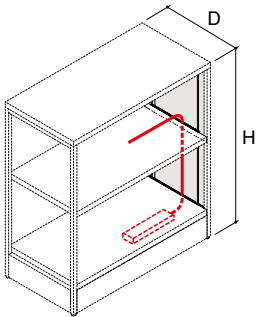
ML92EGN-Z□□□

For 2236H(88 1/16")

For 2651H(104 3/8")

ML92EHN-Z□□□

Wiring



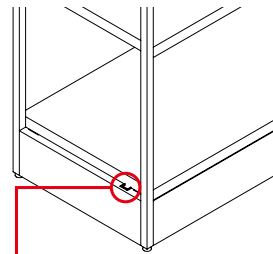
Conceptual drawing of wiring

The end panel is provided with a clearance at the inner side to allow the cables to pass through. Clearance width: 20 mm (3/4"). Also possible to attach to the connecting part of the frame unit.



Wiring within baseboard

Since the base board can be removed, the cables can be stored in the base, causing the leg areas to be clear.

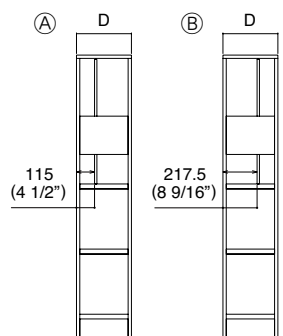


Wiring hole

The other wiring hole is located at the short side and diagonal position of the unit. 2 wiring holes in the base part. Wiring hole size 17 mm x 10 mm (11/16"x3/8")

Board unit panel mounting position

Working/reading surface ▶





There are two options for the place to mount the panel on the board unit. Normally, mount the board unit in the position (A) where it can be easily viewed and operated, or in the position (B) when placing it side by side with the monitor unit.

mm(inch)

Product Code

Product		W	D	H	Product Code
Shelf Unit		900 (35 7/16")	350 (13 3/4")	400 (15 3/4")	ML1AALN
			450 (17 3/4")		ML1BALN
			600 (23 5/8")		ML1CALN
		1200 (47 1/4")	350 (13 3/4")		ML1AAMN
			450 (17 3/4")		ML1BAMN
			600 (23 5/8")		ML1CAMN
		900 (35 7/16")	350 (13 3/4")	900 (35 7/16")	ML1ACLN
			450 (17 3/4")		ML1BCLN
			600 (23 5/8")		ML1CCLN
		1200 (47 1/4")	350 (13 3/4")		ML1ACMN
			450 (17 3/4")		ML1BCMN
			600 (23 5/8")		ML1CCMN
		900 (35 7/16")	350 (13 3/4")	1000 (39 3/8")	ML1AELN
			450 (17 3/4")		ML1BELN
			600 (23 5/8")		ML1CELN
		1200 (47 1/4")	350 (13 3/4")		ML1AEMN
			450 (17 3/4")		ML1BEMN
			600 (23 5/8")		ML1CEMN
		900 (35 7/16")	350 (13 3/4")	1415 (55 11/16")	ML1AFLN
			450 (17 3/4")		ML1BFLN
			600 (23 5/8")		ML1CFLN
		1200 (47 1/4")	350 (13 3/4")		ML1AFMN
			450 (17 3/4")		ML1BFMN
			600 (23 5/8")		ML1CFMN
		900 (35 7/16")	350 (13 3/4")	1821 (71 11/16")	ML1AGLN
			450 (17 3/4")		ML1BGLN
			600 (23 5/8")		ML1CGLN
		1200 (47 1/4")	350 (13 3/4")		ML1AGMN
450 (17 3/4")			ML1BGMN		
600 (23 5/8")			ML1CGMN		
	900 (35 7/16")	350 (13 3/4")	2236 (88 1/16")	ML1AHLN	
		450 (17 3/4")		ML1BHLN	
		600 (23 5/8")		ML1CHLN	
	1200 (47 1/4")	350 (13 3/4")		ML1AHMN	
		450 (17 3/4")		ML1BHMN	
		600 (23 5/8")		ML1CHMN	
	900 (35 7/16")	350 (13 3/4")	2651 (104 3/8")	ML1AJLN	
		450 (17 3/4")		ML1BJLN	
		600 (23 5/8")		ML1CJLN	
	1200 (47 1/4")	350 (13 3/4")		ML1AJMN	
		450 (17 3/4")		ML1BJMN	
		600 (23 5/8")		ML1CJMN	

Product Code

Product		W	D	H	Product Code
Monitor unit (High Position)		900 (35 7/16")	350 (13 3/4")	1821 (71 11/16")	ML1GGLN
			450 (17 3/4")		ML1HGLN
			600 (23 5/8")		ML1JGLN
		1200 (47 1/4")	350 (13 3/4")		ML1GGMN
			450 (17 3/4")		ML1HGMN
			600 (23 5/8")		ML1JGMN
		900 (35 7/16")	350 (13 3/4")	2236 (88 1/16")	ML1GHLN
			450 (17 3/4")		ML1HHLN
			600 (23 5/8")		ML1JHLN
		1200 (47 1/4")	350 (13 3/4")		ML1GHMN
			450 (17 3/4")		ML1HHMN
			600 (23 5/8")		ML1JHMN
		900 (35 7/16")	350 (13 3/4")	2651 (104 3/8")	ML1GJLN
			450 (17 3/4")		ML1HJLN
			600 (23 5/8")		ML1JJLN
		1200 (47 1/4")	350 (13 3/4")		ML1GJMN
			450 (17 3/4")		ML1HJMN
			600 (23 5/8")		ML1JJMN
Monitor unit (Low Position)		900 (35 7/16")	350 (13 3/4")	1821 (71 11/16")	ML1KGLN
			450 (17 3/4")		ML1LGLN
			600 (23 5/8")		ML1MGLN
		1200 (47 1/4")	350 (13 3/4")		ML1KGMN
			450 (17 3/4")		ML1LGMN
			600 (23 5/8")		ML1MGMN
		900 (35 7/16")	350 (13 3/4")	2236 (88 1/16")	ML1KHLN
			450 (17 3/4")		ML1LHLN
			600 (23 5/8")		ML1MHLN
		1200 (47 1/4")	350 (13 3/4")		ML1KHMN
			450 (17 3/4")		ML1LHMN
			600 (23 5/8")		ML1MHMN
		900 (35 7/16")	350 (13 3/4")	2651 (104 3/8")	ML1KJLN
			450 (17 3/4")		ML1LJLN
			600 (23 5/8")		ML1MJLN
		1200 (47 1/4")	350 (13 3/4")		ML1KJMN
			450 (17 3/4")		ML1LJMN
			600 (23 5/8")		ML1MJMN


mm (inch)


Product Code

Product		W	D	H	Product Code
Coat hanger Unit		900 (35 7/16")	350 (13 3/4")	1821 (71 11/16")	ML1DGLN
			450 (17 3/4")		ML1EGLN
			600 (23 5/8")		ML1FGLN
		1200 (47 1/4")	350 (13 3/4")		ML1DGMN
			450 (17 3/4")		ML1EGMN
			600 (23 5/8")		ML1FGMN
		900 (35 7/16")	350 (13 3/4")	2236 (88 1/16")	ML1DHLN
			450 (17 3/4")		ML1EHLN
			600 (23 5/8")		ML1FHLN
		1200 (47 1/4")	350 (13 3/4")		ML1DHMN
			450 (17 3/4")		ML1EHMN
			600 (23 5/8")		ML1FHMN
		900 (35 7/16")	350 (13 3/4")	2651 (104 3/8")	ML1DJLN
			450 (17 3/4")		ML1EJLN
			600 (23 5/8")		ML1FJLN
		1200 (47 1/4")	350 (13 3/4")		ML1DJMN
			450 (17 3/4")		ML1EJMN
			600 (23 5/8")		ML1FJMN
Whiteboard unit		900 (35 7/16")	350 (13 3/4")	1821 (71 11/16")	ML1NGLN
			450 (17 3/4")		ML1PGLN
			600 (23 5/8")		ML1RGLN
		1200 (47 1/4")	350 (13 3/4")		ML1NGMN
			450 (17 3/4")		ML1PGMN
			600 (23 5/8")		ML1RGMN
		900 (35 7/16")	350 (13 3/4")	2236 (88 1/16")	ML1NHLN
			450 (17 3/4")		ML1PHLN
			600 (23 5/8")		ML1RHLN
		1200 (47 1/4")	350 (13 3/4")		ML1NHMN
			450 (17 3/4")		ML1PHMN
			600 (23 5/8")		ML1RHMN
		900 (35 7/16")	350 (13 3/4")	2651 (104 3/8")	ML1NJLN
			450 (17 3/4")		ML1PJLN
			600 (23 5/8")		ML1RJLN
		1200 (47 1/4")	350 (13 3/4")		ML1NJMN
			450 (17 3/4")		ML1PJMN
			600 (23 5/8")		ML1RJMN


mm (inch)

Product Code (Option)

Product		W	D	Product Code
Gate		900 (35 7/16")	350 (13 3/4")	ML4ACEN
		1200 (47 1/4")		ML4ACFN
		1400 (55 1/8")		ML4AAGN
		1500 (59 1/16")		ML4AAHN
		1600 (63")		ML4AAJN
		1800 (70 7/8")		ML4AAKN
		900 (35 7/16")	450 (17 3/4")	ML4BCEN
		1200 (47 1/4")		ML4BCFN
		1400 (55 1/8")		ML4BAGN
		1500 (59 1/16")		ML4BAHN
		1600 (63")		ML4BAJN
		1800 (70 7/8")		ML4BAKN
		900 (35 7/16")	600 (23 5/8")	ML4ACEN
		1200 (47 1/4")		ML4ACFN
		1400 (55 1/8")		ML4AAGN
		1500 (59 1/16")		ML4AAHN
		1600 (63")		ML4AAJN
		1800 (70 7/8")		ML4AAKN


Product		W	H	Product Code
Back Panel	 Fabric (Felt)	900 (35 7/16")	385 (15 3/16")	ML92AEN (FPV□,FLJ□,FO□A,FK□□)
		1200 (47 1/4")		ML92DEN (MJ□0-MJ□3,MJ□4-MJ□7)
				ML92AFN (FPV□,FLJ□,FO□A,FK□□)
				ML92DFN (MJ□0-MJ□3,MJ□4-MJ□7)


The mounting bracket will be exposed on one side. It can be installed on either the front or the back according to the layout.
For 400H (H15 3/4") is not available.

Product		W	H	Product Code
Center Panel		900 (35 7/16")		ML92BEN
		1200 (47 1/4")		ML92BFN

mm(inch)


Product Code (Option)

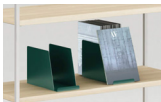
Product		D	H	Product Code
End Panel		350 (13 3/4")	900 (35 7/16")	ML91ACN
		450 (17 3/4")		ML91BCN
		600 (23 5/8")		ML91CCN
		350 (13 3/4")	1000 (39 3/8")	ML91AEN
		450 (17 3/4")		ML91BEN
		600 (23 5/8")		ML91CEN
		350 (13 3/4")	1415 (55 11/16")	ML91AFN
		450 (17 3/4")		ML91BFN
		600 (23 5/8")		ML91CFN
		350 (13 3/4")	1821 (71 11/16")	ML91AGN
		450 (17 3/4")		ML91BGN
		600 (23 5/8")		ML91CGN
		350 (13 3/4")	2236 (88 1/16")	ML91AHN
		450 (17 3/4")		ML91BHN
		600 (23 5/8")		ML91CHN
		350 (13 3/4")	2651 (104 3/8")	ML91AJN
		450 (17 3/4")		ML91BJN
		600 (23 5/8")		ML91CJN


Product		W	D	H	Product Code
Planter box		900 (35 7/16")	223 (8 3/4")	158 (6 1/4")	ML92CEN
		1200 (47 1/4")			ML92CFN

Inner dimensions: 900W(35 7/16") unit: 850Wx190Dx158H (33 7/16"x7 1/2"x6 3/16")
 1200W(47 1/4") unit: 1150Wx190Dx158H (45 1/4"x7 1/2"x6 3/16")


* If the product gets wet, there is a risk of product defects such as rust and warped shelves. Therefore, artificial planting is recommended.
 If you use natural plants that require watering, contact the person in charge. For the 350D frame unit, it cannot be attached to both sides.

Product		W	D	H	Product Code
Bookend		76 (3")	189 (7 7/16")	210 (8 1/4")	ML92DAN

Product		W	D	H	Product Code
Bookstocker		150 (5 15/16")	309 (12 3/16")	210 (8 1/4")	ML92GAN

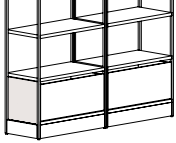
Product		W	D	H	Product Code
Bookstand		150 (5 15/16")	85 (3 3/8")	210 (8 1/4")	ML92FAN

Product Code (Option)

Product		W	D	H	Product Code
Drawer		900 (35 7/16")	350 (13 3/4")	340 (13 3/8")	ML92HAN
			450 (17 3/4")		ML92HBN
			600 (23 5/8")		ML92HCN
		1200 (47 1/4")	350 (13 3/4")		ML92HDN
			450 (17 3/4")		ML92HEN
			600 (23 5/8")		ML92HFN

Arrangement Notes

- Can be mounted on the bottom row of frame units 1415H(55 11/16") and above
- Cannot be attached to shelf unit 400H or coat hanger unit.
- Be sure to install end covers on both sides.
- When installing in a location other than in front of a wall, be sure to install a back panel.
- In the case of 450D and 600D, there is some leftover pull

Product		D	Product Code
End Cover (left/right set)		350 (13 3/4")	ML59AYN
		450 (17 3/4")	ML59BYN
		600 (23 5/8")	ML59CYN

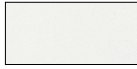
mm (inch)

Color Variations

Frame / Gatel / End Panel / Planter box / Bookend / Bookstand / Drawer / Wiring Cover

ZA75

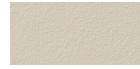
Satin Finish ZK25, ZH1□



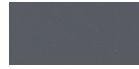
ZA75
Neo White



ZK25
Black



ZH17
Light Greige



ZH15
Dark Gray



ZH14
Sage



ZH12
Dark Green



ZH13
Yellow



ZH11
Orange Red

Shelf

High-Pressure Laminate



MDS4
White
(MG07+GG78)



MDS5
Black
(MK74+GG78)
Anti-fingerprint**



MX61
Prize wood light
(MX51+GE21)
Anti-fingerprint**



MX60
Prize wood natural
(MX50+GE50)
Anti-fingerprint**



MX62
Prize wood medium
(MX52+GE22)
Anti-fingerprint**



MX63
Prize wood dark
(MX53+GE23)
Anti-fingerprint**



Shelftop
Edge

**Anti-fingerprint laminate surface provides resistance to fingerprints and is easily wiped clean.



MEP4
Vintage elm
(MW74+GG74)



MEP1
Chalked elm
(MW71+GG71)



MEP2
Sawn oak
(MW72+GG72)



MEP3
Rustic pine
(MW73+GG73)

Combination specifications MF□□ MJ□□ MH□3 ~ 5, MU0□ MH□6 ~ 9, MGM□

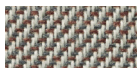
	Frame							
	ZA75 (Neo White)	ZK25 (Black)	ZH17 (Light Greige)	ZH15 (Dark Gray)	ZH14 (Sage)	ZH12 (Dark Green)	ZH13 (Yellow)	ZH11 (Orange Red)
Shelf	Combination Code							
MDS4 (White)	MFV1	MJV1	MFV8	MFV7	MFV6	MFV4	MFV5	MFV3
MDS5 (Black)	MFV1	MJV1	MFV8	MFV7	MFV6	MFV4	MFV5	MFV3
MX61 (Prize wood light)	MU03	MHV3	MJP3	MHK3	MHJ3	MHG3	MHH3	MHF3
MX60 (Prize wood natural)	MU07	MHV0	MJP0	MHK0	MHJ0	MHG0	MHH0	MHF0
MX62 (Prize wood medium)	MU04	MHV4	MJP4	MHK4	MHJ4	MHG4	MHH4	MHF4
MX63 (Prize wood dark)	MU05	MHV5	MJP5	MHK5	MHJ5	MHG5	MHH5	MHF5
MEP4 (Vintage elm)	MGM4	MHV9	MJR9	MHK9	MHJ9	MHG9	MHH9	MHF9
MEP1 (Chalked elm)	MGM1	MHV6	MJR6	MHK6	MHJ6	MHG6	MHH6	MHF6
MEP2 (Sawn oak)	MGM2	MHV7	MJR7	MHK7	MHJ7	MHG7	MHH7	MHF7
MEP3 (Rustic pine)	MGM3	MHV8	MJR8	MHK8	MHJ8	MHG8	MHH8	MHF8

MDS5/MX61/MX60/MX62/MX63 Anti-fingerprint**

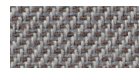
**Anti-fingerprint laminate surface provides resistance to fingerprints and is easily wiped clean.

Back Panel / Center Panel

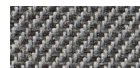
Twill



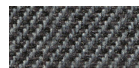
FKY7
Beige



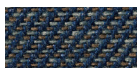
FKY3
Light Gray



FKY2
Gray



FKY1
Dark Gray



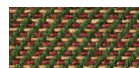
FKY4
Dark Blue



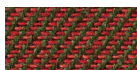
FKY6
Sage



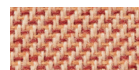
FKY5
Dark Green



FKY9
Yellow Green



FKY8
Terracotta



FKZ7
Pale Pink

Combination specifications F5□A, F8□A

	Bracket	
	ZA75 (Neo White)	ZK25 (Black)
Panel	Combination Code	
FKY7 (Beige)	F57A	F87A
FKY3 (Light Gray)	F53A	F83A
FKY2 (Gray)	F52A	F82A
FKY1 (Dark Gray)	F51A	F81A
FKY4 (Dark Blue)	F54A	F84A
FKY6 (Sage)	F56A	F86A
FKY5 (Dark Green)	F55A	F85A
FKY9 (Yellow Green)	F59A	F89A
FKY8 (Terracotta)	F58A	F88A
FKZ7 (Pale Pink)	F50A	F80A

Color Variations

Back Panel / Center Panel

Interlock

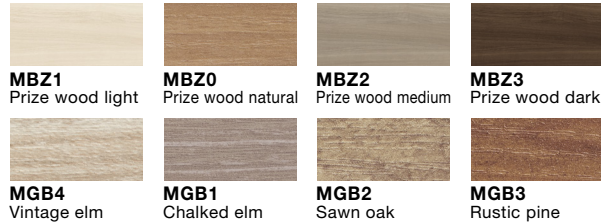


Felt








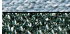
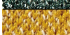





Back Panel

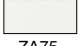


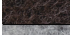


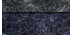





Wood



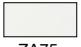




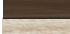


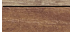

Combination specifications FKF□, F2E□

		Bracket	
		 ZA75 (Neo White)	 ZK25 (Black)
Panel		Combination Code	
	FXT2 (Beige)	FKF2	F2E2
	FXT3 (Dark Brown)	FKF3	F2E3
	FXT1 (Gray)	FKF1	F2E1
	FXT0 (Dark Gray)	FKF0	F2E0
	FXT4 (Indigo)	FKF4	F2E4
	FXT9 (Sage)	FKF9	F2E9
	FXT5 (Dark Green)	FKF5	F2E5
	FXT7 (Yellow)	FKF7	F2E7
	FXT6 (Terracotta)	FKF6	F2E6
	FXT8 (Pale Pink)	FKF8	F2E8

Combination specifications FLJ□, FPV□

		Bracket	
		 ZA75 (Neo White)	 ZK25 (Black)
Panel		Combination Code	
	FJZ0 (Beige)	FLJ0	FPV0
	FJZ1 (Dark Brown)	FLJ1	FPV1
	FJZ2 (Light Gray)	FLJ2	FPV2
	FJZ3 (Gray)	FLJ3	FPV3
	FJZ4 (Dark Gray)	FLJ4	FPV4
	FJZ5 (Indigo)	FLJ5	FPV5
	FJZ6 (Sage)	FLJ6	FPV6
	FJZ7 (Green)	FLJ7	FPV7
	FJZ8 (Yellow)	FLJ8	FPV8
	FJZ9 (Orange Red)	FLJ9	FPV9

Combination specifications MJY□, MJZ□

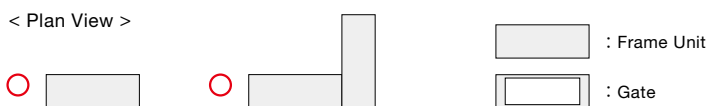
		Bracket	
		 ZA75 (Neo White)	 ZK25 (Black)
Panel		Combination Code	
	MBZ1 (Prize wood light)	MJY1	MJZ1
	MBZ0 (Prize wood natural)	MJY0	MJZ0
	MBZ2 (Prize wood medium)	MJY2	MJZ2
	MBZ3 (Prize wood dark)	MJY3	MJZ3
	MGB4 (Vintage elm)	MJY7	MJZ7
	MGB1 (Chalked elm)	MJY4	MJZ4
	MGB2 (Sawn oak)	MJY5	MJZ5
	MGB3 (Rustic pine)	MJY6	MJZ6

Installation Requirements

■ Low type [1000H(39 3/8") or lower]

- The units can be installed as a single unit excluding those of 1000H×350D(39 3/8"×13 3/4").
- When arranging the units of 1000H×350D(39 3/8"×13 3/4"), attach them to the floor or use a layout of L-shaped connection.

< Plan View >

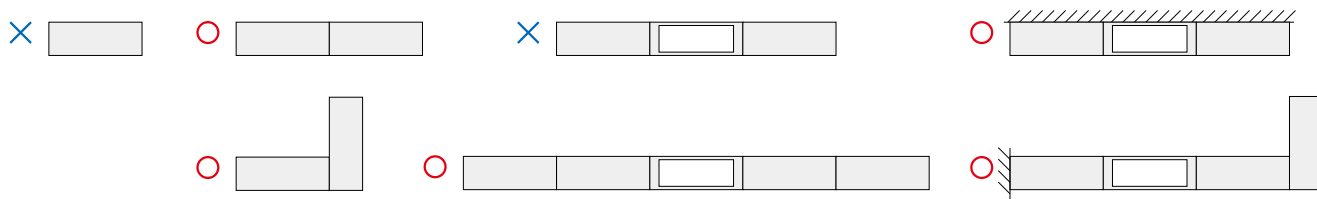


* Except for the units of 1000H×350D(39 3/8"×13 3/4").

■ High type [1415H(55 11/16")]

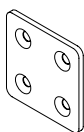
- Make sure to attach all units to the floor or wall.
- Since the connection by use of a gate is auxiliary measures, be sure to connect the units themselves together.
- Any horizontal connection brackets are not included. Separately procure them according to the layout. (See the following)
- Please use by connecting two or more units of 1000H(39 3/8") or higher.
- If you use a layout with only one unit, attach the unit to the wall.
- Conditions remain the same when two or more units of different heights are connected.

< Plan View >



Attaching to the floor/wall

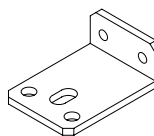
Floor attaching brackets are supplied with the product. Separately prepare anchor bolts and self-tapping anchors according to the floor type. Implement wall attachment only to the building frame. The product cannot be attached to a partition or a built-in wall. Since the shelf body will shake in case of an earthquake, it cannot be arranged in front of windows or glass partitions.



Horizontal connection bracket Set
 For 900H(35 7/16"), 1000H(39 3/8"), 1415H(55 11/16")
ML93ZAN-Z□□□
 For 1821H(71 11/16"), 2236H(88 1/16")
ML93ZBN-Z□□□
 For 2651H(104 3/8")
ML93ZCN-Z□□□
 For 2236H(88 1/16"), 2651H(104 3/8") For step connection
ML93ZDN-Z□□□

Required number of sets: No. of connected units - 1 For 400H type, it is not necessary to procure a set of horizontal connecting brackets.

Caution
 When connecting steps of other heights, please arrange a set of hardware for the lower of the two units.



Wall fixing bracket
 223W×158D (8 3/4"×6 3/16")
ML93YAN-ZA75,ZK25

1 piece included. Can be attached to two locations per frame unit. Any screws for attaching to the wall are not included. Separately procure them according to the type of wall surface.

Precautions for procurement

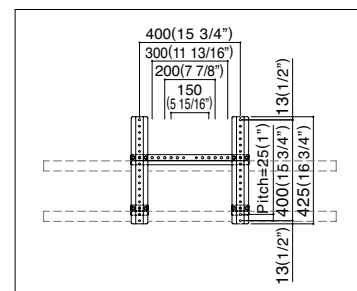
Lives Shelf max. loading mass

* The maximum loading mass is as shown in the table. Do not exceed the values listed in the table. Store items so that they are equally distributed, and store from the bottom up. When a sofa or the like is built in the gate, loads may fall off. Be sure to use a book stand or end panel to prevent them from falling.

Name	Maximum loading capacity
Shelf	30kg

Precautions for procuring the monitor unit

Please procure the monitor and its mounting screws by yourself. Please check the instruction manual of the monitor in advance for the possibility of mounting and the necessary screws.



[Mounting pitch]
 Horizontal: 150/200/300/400
 (5 15/16"-7 7/8"-11 13/16"-15 3/4")
 Vertical: 100/150/200/300/400
 (3 15/16"-5 15/16"-7 7/8"-11 13/16"-15 3/4")

Compatible monitor

- The mounting pitch should be correct (see the figure on the right).
- The back of the monitor should be flat without any protrusions.

Compatible size

- < 1200W(47 1/4") monitor unit >
 - 50-inch 40 kg or less
 - External dimension 1155W×795H×100D(45 7/16"×31 5/16"×3 15/16") or less
- < 900W(35 7/16") monitor unit >
 - 32-inch 40 kg or less
 - External dimension 858W×795D×100D(33 3/4"×31 5/16"×3 15/16") or less

Dimensions

Shelf Unit

400H (15 3/4")		900H (35 7/16")		1000H (39 3/8")		1415H (55 11/16")	
W	D	W	D	W	D	W	D
900 (35 7/16")	350 (13 3/4")	900 (35 7/16")	350 (13 3/4")	900 (35 7/16")	350 (13 3/4")	900 (35 7/16")	350 (13 3/4")
	450 (17 3/4")		450 (17 3/4")		450 (17 3/4")		450 (17 3/4")
	600 (23 5/8")		600 (23 5/8")		600 (23 5/8")		600 (23 5/8")
1200 (47 1/4")	350 (13 3/4")	1200 (47 1/4")	350 (13 3/4")	1200 (47 1/4")	350 (13 3/4")	1200 (47 1/4")	350 (13 3/4")
	450 (17 3/4")		450 (17 3/4")		450 (17 3/4")		450 (17 3/4")
	600 (23 5/8")		600 (23 5/8")		600 (23 5/8")		600 (23 5/8")

1821H (71 11/16")		2236H (88 1/16")		2651H (104 3/8")	
W	D	W	D	W	D
900 (35 7/16")	350 (13 3/4")	900 (35 7/16")	350 (13 3/4")	900 (35 7/16")	350 (13 3/4")
	450 (17 3/4")		450 (17 3/4")		450 (17 3/4")
	600 (23 5/8")		600 (23 5/8")		600 (23 5/8")
1200 (47 1/4")	350 (13 3/4")	1200 (47 1/4")	350 (13 3/4")	1200 (47 1/4")	350 (13 3/4")
	450 (17 3/4")		450 (17 3/4")		450 (17 3/4")
	600 (23 5/8")		600 (23 5/8")		600 (23 5/8")

Coat hanger Unit

1821H (71 11/16")		2236H (88 1/16")		2651H (104 3/8")	
W	D	W	D	W	D
900 (35 7/16")	350 (13 3/4")	900 (35 7/16")	350 (13 3/4")	900 (35 7/16")	350 (13 3/4")
	450 (17 3/4")		450 (17 3/4")		450 (17 3/4")
	600 (23 5/8")		600 (23 5/8")		600 (23 5/8")
1200 (47 1/4")	350 (13 3/4")	1200 (47 1/4")	350 (13 3/4")	1200 (47 1/4")	350 (13 3/4")
	450 (17 3/4")		450 (17 3/4")		450 (17 3/4")
	600 (23 5/8")		600 (23 5/8")		600 (23 5/8")

Dimensions

Monitor unit (High Position)

1821H (71 11/16")		2236H (88 1/16")		2651H (104 3/8")	
W	D	W	D	W	D
900 (35 7/16")	350 (13 3/4")	900 (35 7/16")	350 (13 3/4")	900 (35 7/16")	350 (13 3/4")
	450 (17 3/4")		450 (17 3/4")		450 (17 3/4")
	600 (23 5/8")		600 (23 5/8")		600 (23 5/8")
1200 (47 1/4")	350 (13 3/4")	1200 (47 1/4")	350 (13 3/4")	1200 (47 1/4")	350 (13 3/4")
	450 (17 3/4")		450 (17 3/4")		450 (17 3/4")
	600 (23 5/8")		600 (23 5/8")		600 (23 5/8")

Monitor unit (Low Position)

1821H (71 11/16")		2236H (88 1/16")		2651H (104 3/8")	
W	D	W	D	W	D
900 (35 7/16")	350 (13 3/4")	900 (35 7/16")	350 (13 3/4")	900 (35 7/16")	350 (13 3/4")
	450 (17 3/4")		450 (17 3/4")		450 (17 3/4")
	600 (23 5/8")		600 (23 5/8")		600 (23 5/8")
1200 (47 1/4")	350 (13 3/4")	1200 (47 1/4")	350 (13 3/4")	1200 (47 1/4")	350 (13 3/4")
	450 (17 3/4")		450 (17 3/4")		450 (17 3/4")
	600 (23 5/8")		600 (23 5/8")		600 (23 5/8")

Whiteboard unit

1821H (71 11/16")		2236H (88 1/16")		2651H (104 3/8")	
W	D	W	D	W	D
900 (35 7/16")	350 (13 3/4")	900 (35 7/16")	350 (13 3/4")	900 (35 7/16")	350 (13 3/4")
	450 (17 3/4")		450 (17 3/4")		450 (17 3/4")
	600 (23 5/8")		600 (23 5/8")		600 (23 5/8")
1200 (47 1/4")	350 (13 3/4")	1200 (47 1/4")	350 (13 3/4")	1200 (47 1/4")	350 (13 3/4")
	450 (17 3/4")		450 (17 3/4")		450 (17 3/4")
	600 (23 5/8")		600 (23 5/8")		600 (23 5/8")

mm (inch)

OKAMURA

OKAMURA CORPORATION

International Sales & Marketing Div.

www.okamura.com

The products listed in this catalog are available as of September 2024. Please note that specifications, dimensions, and colors are subject to change without notice. The colors of the actual products may differ somewhat from the colors shown in the catalog, depending on printing conditions.