

plimode

Spec Guide

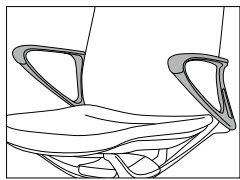
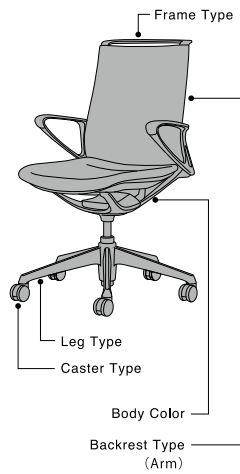
Issued January 2025



okamura

Product Code

Upholstered



CA □ □ □ □ - **F** □ □ □ □

plimode

Caster & Base Type

Backrest & Arm Type

Leg & Seat Type

Frame Type & Body Color

Upholstered

- H: Without Brake, Hard Caster
 - J: Without Brake, Soft Caster
 - E: With Brake, Hard Caster
 - F: With Brake, Soft Caster
 - G: Glide
- For 5-Star Base
- For 4-Star Base

- E: Middle Back
 - G: High Back
 - 5: Middle Back
 - 7: High Back
 - 6: Middle Back
 - 8: High Back
- With Adjustable Arm
- With Fixed Arm
- Without Arm

- B: 5-Star Base
 - F: 4-Star Base
 - H: High Stool
- Standard Seat

- R: Plastic Frame, Black Body
- S: Aluminum Frame, Black Body
- W: Plastic Frame, White Body
- Z: Aluminum Frame, White Body

- F1Q□: Herringbone
- FWM□, FWN□: Hopsack
- FSF□, FSG□: Plain
- FXW□: Interlock

Accessories

CA52 □ **W** - **G** □ □ □ □

Option Parts

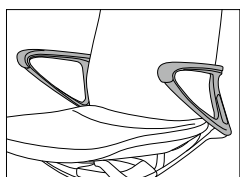
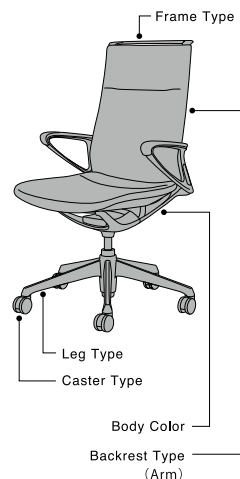
Arm Type

Color

- 1: Fixed Arm (Plastic)
- 2: Fixed Arm (Aluminum)
- 9: Adjustable Arm (Plastic)

- G721: Black
- GB03: White

Leather



CA □ □ □ □ - **P** □ □ □ □

plimode

Caster & Base Type

Backrest & Arm Type

Leg & Seat Type

Frame Type & Body Color

Leather Color

- H: Without Brake, Hard Caster
 - J: Without Brake, Soft Caster
 - E: With Brake, Hard Caster
 - F: With Brake, Soft Caster
 - G: Glide
- For 5-Star Base
- For 4-Star Base

- 5: Middle Back
 - 7: High Back
- With Fixed Arm

- C: 5-Star Base
 - G: 4-Star Base
- Wide Seat

- S: Aluminum Frame, Black Body
- Z: Aluminum Frame, White Body

- P676: Black
- PC18: White
- PD35: Beige

Accessories

CA522W - **G** □ □ □ □

Option Parts

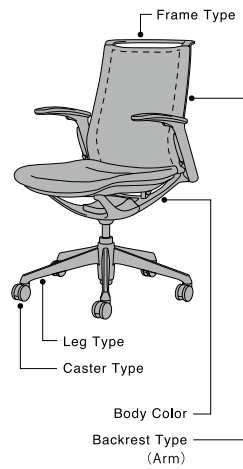
Arm Type

Color

- 2: Fixed Arm (Aluminum)

- G721: Black
- GB03: White

Mesh



CA □ □ □ □ - **F** □ □ □

plimode

Caster & Base Type

- H: Without Brake, Hard Caster
 - J: Without Brake, Soft Caster
 - E: With Brake, Hard Caster
 - F: With Brake, Soft Caster
- For 5-Star Base

Backrest & Arm Type

- A: Middle Back — With Adjustable Arm
- 1: Middle Back — With Fixed Arm
- 2: Middle Back — Without Arm

Leg & Seat Type

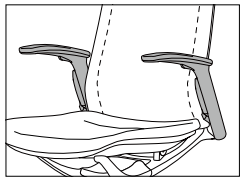
- B: 5-Star Base — Standard Seat

Frame Type & Body Color

- R: Plastic Frame, Black Body
- W: Plastic Frame, White Body

Mesh

- FKA□, FKB□: Plain
- F1K□: Interlock



Accessories

CA52 □ □ □ □ - **G** □ □ □

Option Parts

Arm Type

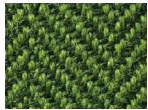
- 1: Fixed Arm (Plastic)
- 9: Adjustable Arm (Plastic)

Color

- G721: Black
- GB03: White

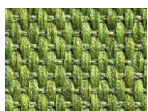
Fabric

Upholstered



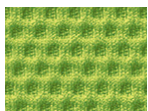
Herringbone

- | | | | | | | | | | |
|---------------|--------------------|-------------------|---------------|-------------------|-------------------|--------------------|---------------|----------------|--------------------|
| | | | | | | | | | |
| F1Q0
Beige | F1Q1
Light Gray | F1Q2
Dark Gray | F1Q3
Black | F1Q4
Dark Blue | F1Q5
Aqua Blue | F1Q6
Blue Green | F1Q7
Green | F1Q8
Yellow | F1Q9
Orange Red |



Hopsack

- | | | | | | | | | | | |
|---------------|--------------------|-------------------|---------------|----------------|-------------------|--------------|--------------------|----------------|----------------|-------------|
| | | | | | | | | | | |
| FWM7
Beige | FWM3
Light Gray | FWM2
Dark Gray | FWM1
Black | FWN7
Purple | FWM4
Dark Blue | FWN4
Sage | FWM5
Lime Green | FWM6
Yellow | FWM8
Orange | FWM9
Red |



Plain

- | | | | | | | | | |
|---------------|--------------------|---------------|-------------------|--------------|--------------------|----------------|----------------|-------------|
| | | | | | | | | |
| FSF7
Beige | FSG3
Light Gray | FSF1
Black | FSG4
Dark Blue | FSG7
Sage | FSF5
Lime Green | FSG9
Yellow | FSG8
Orange | FSF9
Red |



Interlock

- | | | | | | | | | |
|---------------|--------------------|--------------|----------------|--------------|--------------------|----------------|--------------------|-------------------|
| | | | | | | | | |
| FXW2
Beige | FXW3
Dark Brown | FXW1
Gray | FXW4
Indigo | FXW9
Sage | FXW5
Dark Green | FXW7
Yellow | FXW6
Terracotta | FXW8
Pale Pink |

Mesh



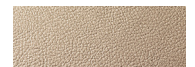
Plain

- | | | | | | | | | | |
|--------------------|---------------------|---------------|---------------------|--------------|---------------|----------------|--------------------|-------------|-------------------|
| | | | | | | | | | |
| FKA3
Light Gray | FKA2
Medium Gray | FKA1
Black | FKB3
Medium Blue | FKA6
Sage | FKB5
Green | FKB9
Yellow | FKA8
Orange Red | FKA9
Red | FKA7
Pale Pink |

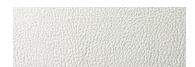
Interlock

- | | | | | |
|---------------|--------------------|--------------|----------------|--------------------|
| | | | | |
| F1K2
Beige | F1K3
Dark Brown | F1K1
Gray | F1K4
Indigo | F1K5
Dark Green |

Leather



PD35 Beige



PC18 White



P676 Black

* In addition to standard fabrics listed, there are more fabrics available from the "Okamura Premier Collection". Please visit our website for more information.

Specifications

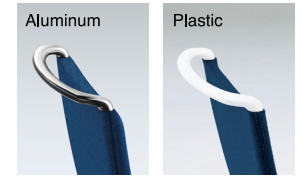
Backrest Type



Body Color



Frame Type



Seat Type



Arm Type

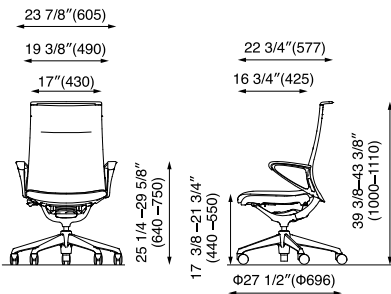


Base Type

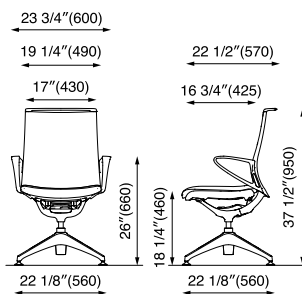


Dimensions *inch(mm)

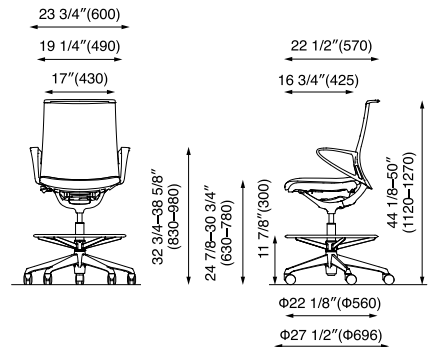
Upholstered 5-Star Base



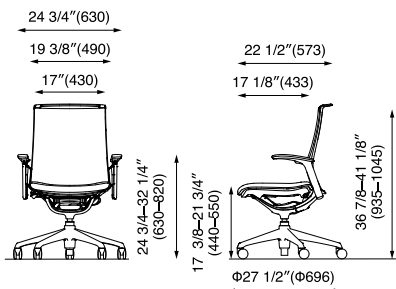
Upholstered 4-Star Base



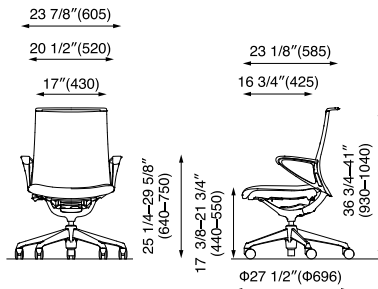
Upholstered High Stool



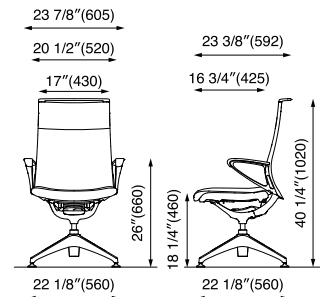
Mesh 5-Star Base



Leather 5-Star Base



Leather 4-Star Base



OKAMURA

OKAMURA CORPORATION

International Sales & Marketing Div.

2-14-27, Akasaka, Minato-ku, Tokyo 107-0052, JAPAN

Tel: +81-3-5561-4085 Fax: +81-3-5561-4086

<https://www.okamura.com>

The products listed in this catalog are available as of January 2025. Please note that specifications, dimensions, and colors are subject to change without notice. The colors of the actual products may differ somewhat from the colors shown in the catalog, depending on printing conditions.