

*Finora*

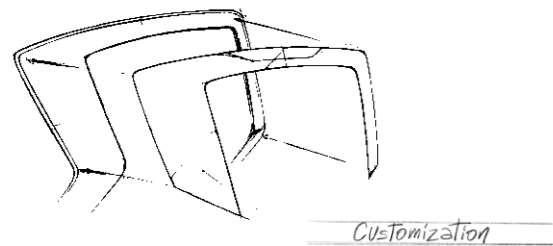
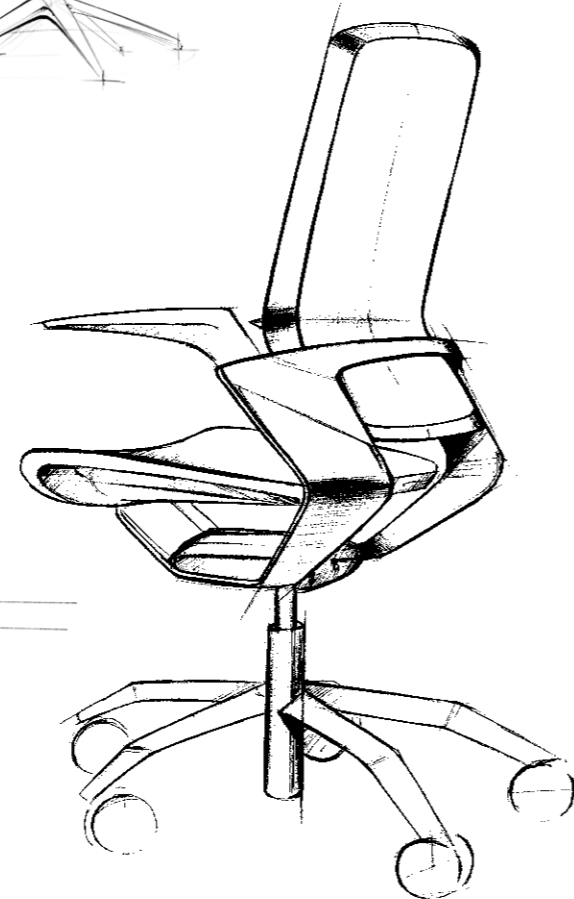


**okamura**

# OKAMURA × ITALDESIGN

A statement  
of style and identity.

Introducing Finora: dreamed by Italdesign,  
a company that excels in mastering the complexity of  
automotive design, and engineered by Okamura.  
Precision meets soul in graceful symmetries  
and clean contours, creating a chair that brings  
the beauty of lightness with full features  
for any workplace.




The Industrial Design Division of ITALDESIGN, headquartered in Moncalieri, Torino - Italy, was established in 1981 and today is one of the most renowned and leading organizations in the industrial design field on a worldwide level.

# Finora

Luxury meets engineering insight.

Elevate your work in the uncompromised  
beauty of lightness.





## An uncompromising beauty of lightness.

Every component of Finora is designed to combine style and functionality in one sleek form. The backrest sweeps in a simple curve, gracefully integrating the armrests. Adjustment mechanisms are tucked neatly under the seat.



Maximal impact  
with minimal materials.

Thin and light unite to make an understated impact.  
The streamlined design is confident in character  
and elegantly upscale.



## Intelligent engineering.

Highly adjustable, to bring a new level of comfort.  
The flexible backrest and 4-D arms adjust to your body,  
creating a comfortable seating experience.





## Stunning design. Attention to detail.

Inspired by classic automobile styling, commitment to design, creates moments of delight throughout.

The decorative panels are available in chrome, black, or white – all with a gloss finish to contrast with the matte mesh finish. Every detail of Finora has been considered to adapt to a multitude of office environments.





## Make it yours.

Transform the exceptional into the personal, with finishes that bring radiance and individuality to your Finora chair. Choose from mesh or standard seat fabric, available in fourteen beautiful colors. The seat can also be upholstered with an upgraded curated selection of fabrics for a sophisticated look.





Now you see it, now you don't.

Unlike other task seating, Finora's backrest and seat are a proprietary matte mesh that is translucent. Visually barely there, but engineered for strength and durability.









# FUNCTIONS

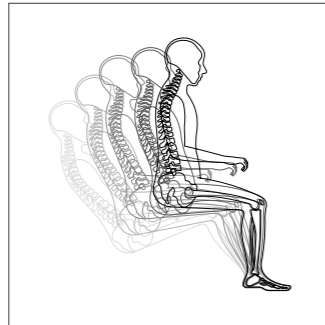
## Flexible Frame

The streamlined backrest flexes with your body for incredible comfort.



## Ankle Tilt Reclining

Using the ankle as a pivot point, a tilt mechanism moves in sync with the seat for added support – stimulating healthy variation in posture and relaxation, with uninterrupted comfort.

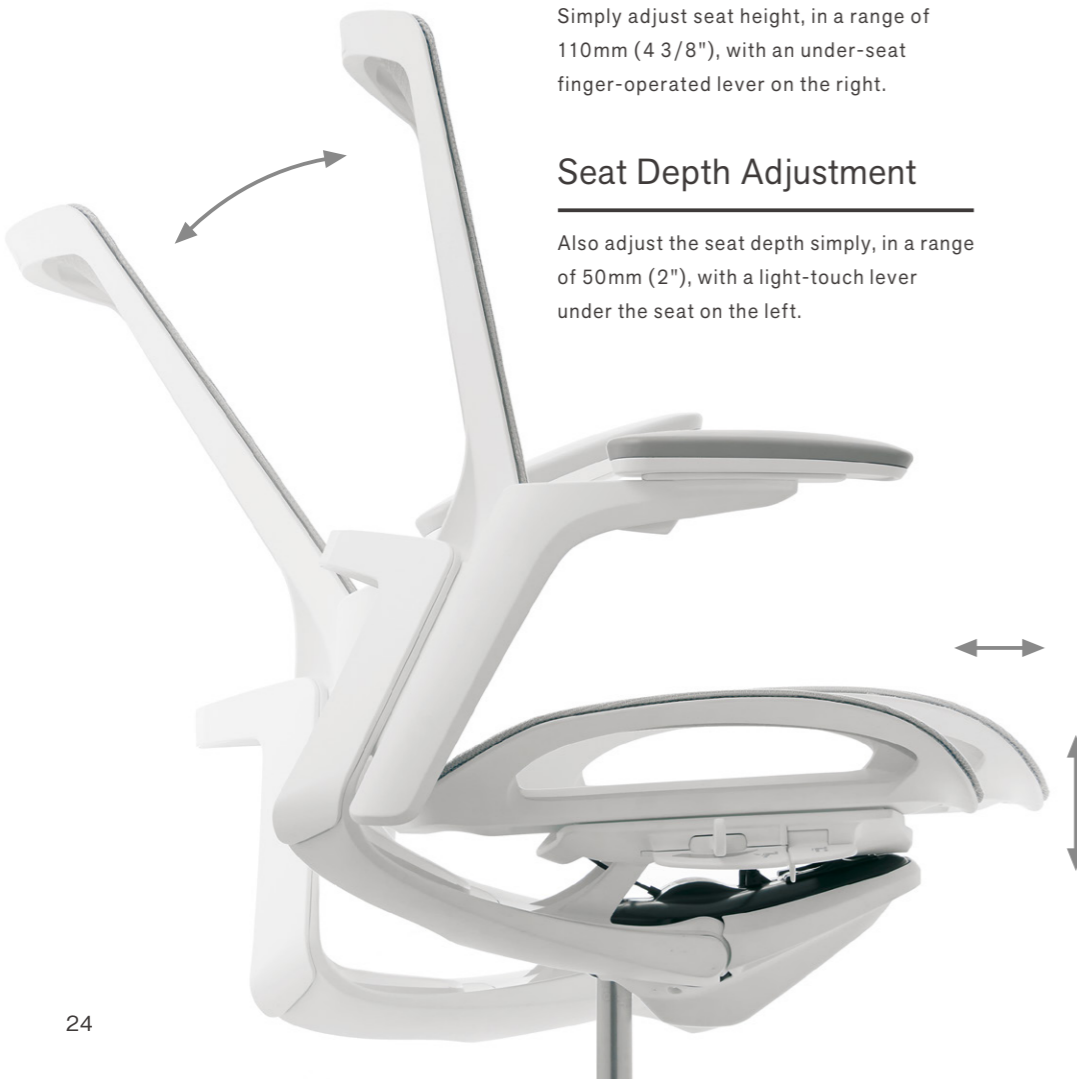


## Seat Height Adjustment

Simply adjust seat height, in a range of 110mm (4 3/8"), with an under-seat finger-operated lever on the right.

## Seat Depth Adjustment

Also adjust the seat depth simply, in a range of 50mm (2"), with a light-touch lever under the seat on the left.



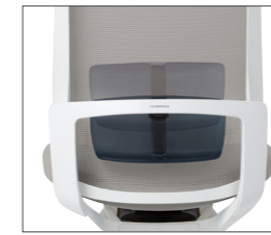
## Smart Adjustment

Seat adjustment controls are consolidated into a simple cluster under the seat. Controls are easily operated from a natural seated position.



## Quick Slide Operation

Reclining tension is adjustable by sliding the lever under the seat on the right.



## Lumbar Support

The lumbar support adjusts, in a range of 60mm (2 3/8"), to match the natural S-curve of your spine, reducing the strain on the back for a healthy posture.



## Headrest

The large headrest is height adjustable, in a range of 100mm (4"), and angle-adjustable up to 35°, providing optimal neck support for all body types.

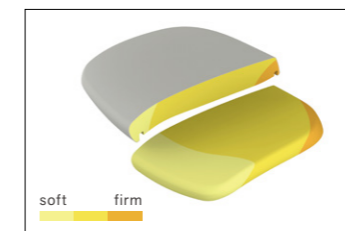
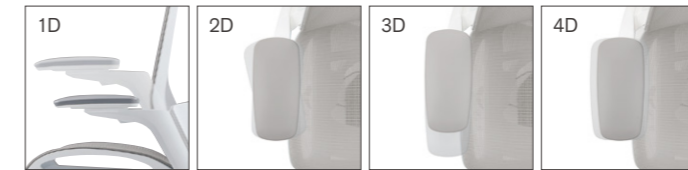


## Hanger

The height-adjustable hanger can be lowered behind the backrest when not in use.

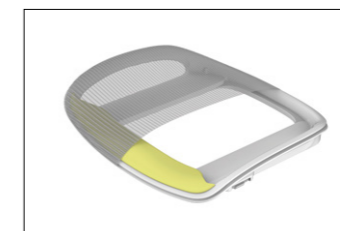
## 4-D Adjustable Arms

The adjustable arms easily adjust up and down, pivot inward and outward, slide forward and backward, and in and out.



## Multiple Density Cushion

Our seat cushion is manufactured by casting urethane foam of three different degrees of firmness together, to create a single cushion. Providing softer support at the front and denser cushioning at the back.



## Front Support Cushion for Mesh

The mesh seat is fitted with soft urethane foam at the front of the seat, reducing pressure on the thighs for improved circulation.

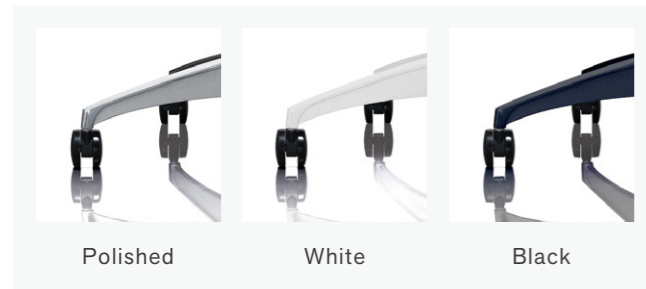


# SPECIFICATIONS

## | Body & Decoration Panel Colors



## | Base Colors



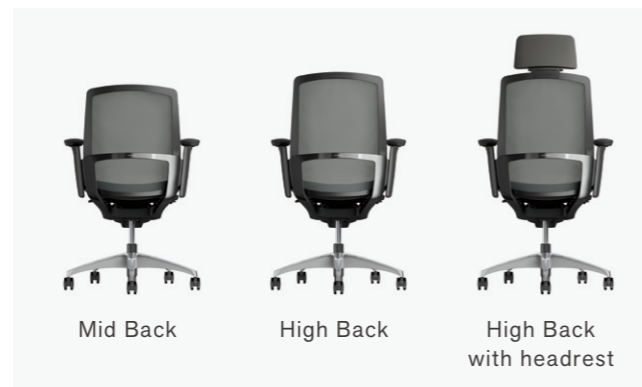
## | Seat types



## | Armrest Types



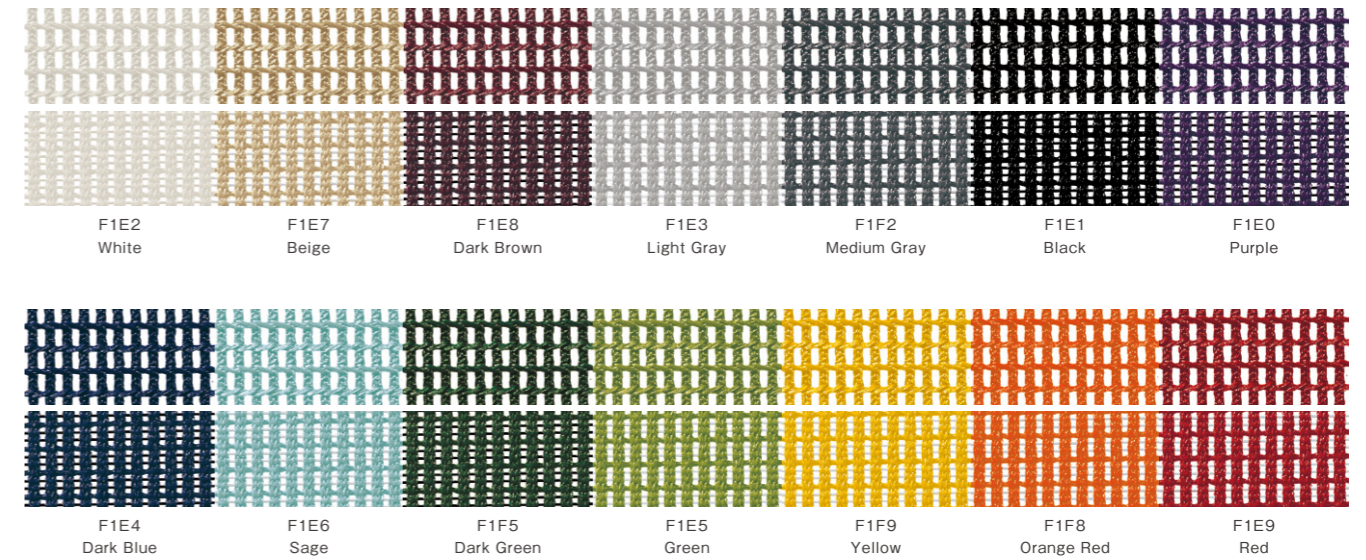
## | Back Height



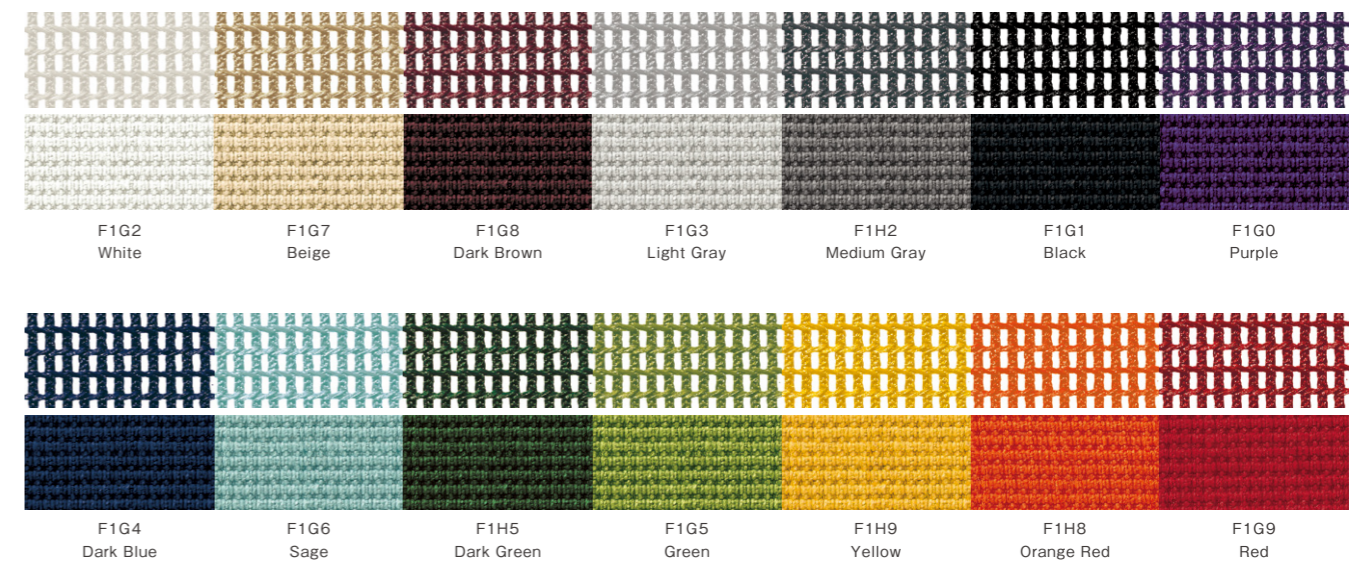
## | Options



## | Backrest: Mesh, Seat: Mesh



## | Backrest: Mesh, Seat: Fabric



## CMF

Color, material, and finish: at Okamura, we believe that the three components that give any chair its final look are three opportunities to inspire creativity and to elevate the seating experience.

Gone are the days of "one style fits all" – think of Finora as a beautifully designed blank canvas to feature many CMFs throughout your offices.



**okamura**